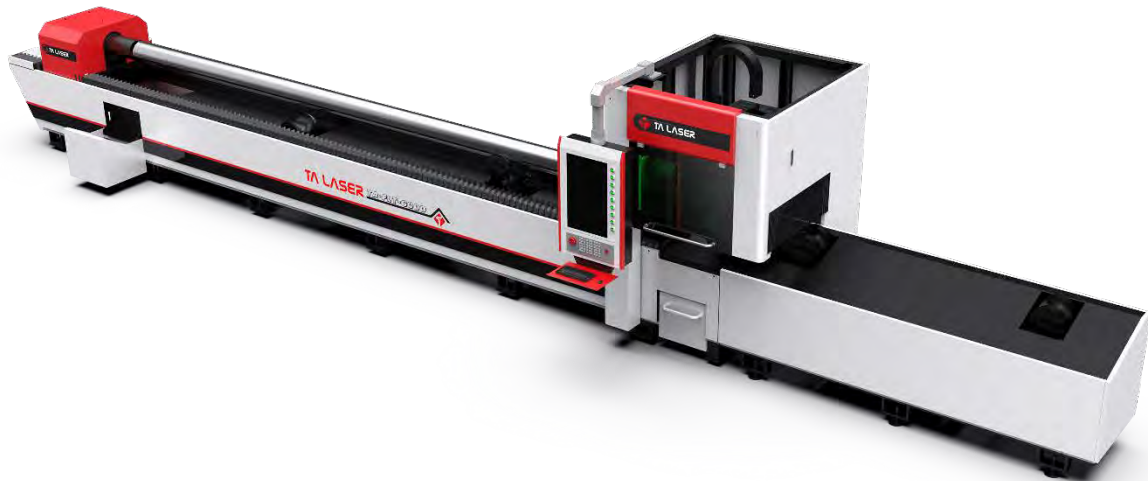


Technical Solution

Fibre Laser Cutting Machine TA- FLT6000-1500W



About TA

Wuhan TA Laser Machinery Co., Ltd is an integration of a laser cutting machine manufacturer and industrial machinery trading company based in south central China, Wuhan city.

Wuhan TA Laser Machinery Co., Ltd

Wuhan TA is dedicated and committed to represent the highest quality in equipment and customer service.

Who we are

- An ambitious laser cutting machine manufacturer that enjoys a leaping growth over the past 6 continuous years.
- Laser cutting machine and parts exporter in China.
- Metal sheet processing machinery & parts international trading and exporting.
- Tech service provider, including machine installation, debugging, upgrading, maintenance, trouble-shooting.
- Purchasing service provider, we help purchase all the industrial machinery and parts for clients.

1. Standard Configurations of TA-FLT6000-1500W

Major Configurations	Content	Brand
Laser Generator	Raycus	Raycus 1500W
Laser Cutting Head	Auto Focus	Raytool, Switzerland BM111
Height Controller	Capacitive transducer	BOCHU, China
CNC Controller	TubePro	
Professional Laser Cutting Software	TubePro	
Speed Reducer	Shimpo	Shimpo, Japan
Rack and Pinion	YYC	YYC, Taiwan
Linear Guide	HIWIN	HIWIN, Taiwan
Proportional Valve	SMC	SMC, Japan
X/Y Drag Chain	IGUS	IGUS, Germany
Shield Cover	Domestic	Cangzhou, China
Industrial Water Chiller	Domestic	TongFei, China
Industrial PC and LCD Screen	Domestic	Dell, USA
Double Servo driver system	Delta	Delta, Taiwan

2. Technical Data

Technical spec	Standard Data
Total weight	5T
Total Power	26KW
Laser Type	Fibre laser
Maximum Cutting Thickness	10MM Mild steel, 4MM Stainless steel
Effective Cutting size	Circular tube:20MM-220MM Square tube:20MM-155MM
X.Y.W Axis Drive system	Rack and Pinion mode, Delta servo system Y /2KW, W1 W2/ 3KW, X/1.5KW, Z/400W
Laser cutting head Drive System	Ball screw mode, Delta servo system
Machine loading tube weight	900KG
Laser cutting head lifting distance	150MM

3. Technical Accuracy

Maximum rapid X, Y Axis Speed	100m/min
Maximum rapid W Axis Speed	120r/min
Maximum Acceleration X, Y Axis Speed	1.0G
Position Accuracy	0.02mm/M
Repeat Accuracy	0.03mm/M
Cooling Style	Recycling water
Assistant Gas	Oxygen/Nitrogen/Compressor Air
Continuous Working Time	24 Hrs

4. Equipment Working Condition

Sub item	Item	Requirements	Notes
Power	Laser Source	5KW	The total installed capacity is not less than 26KW, and this machine need very good ground line.
	Chiller	3KW	
	Machine Servo System	9.9KW	
	Dust blower Motor	5.5KW	
	Other accessories	2KW	
	Stability of 3-phase power	380V±5%	
	Instability of 3-phase power	<2.5%	
	Earthing	<40hm	
Water	Water for Chiller	Distilled water without minerals	Change every month
Gas	Cutting Gas	N ₂ >99.5%	The processing parameters
		O ₂ >99.5%	
		AIR pressure should not less than 0.8MPA	
Working	Temperature requirements	5-40 Degree	
	Humidity requirements	Less than 70%	
	Foundation requirement	There should be no vibration source nearby	If there is a vibration source on site or nearby, the user is required to dig an anti-vibration trench around the foundation
Work piece	For CS and SS: quality surface and no rust		

5. Fibre laser System

5.1.1 Fibre Laser Generator

Raycus 1500W

No lens built inside laser generator to avoid maintenance.



Beam delivery system consists of fibres.

Compact-design, easy for integration.

Start-up time not needed.

Excellent cutting capability.

Good beam quality and high-power density.

Fibre Laser Conversion Efficiency is more than 30%, compared with YAG or CO2 machine, it significantly saves power consumption when working, saving running costs and to achieve the highest production efficiency.

Fibre laser adopting Semiconductor Modular and Redundancy Design, there is no optical lens in resonant cavity like YAG, it doesn't need any start time, featuring free adjustment, free maintenance, high stability, reducing parts cost and maintenance time, which is incomparable by other traditional cutting machinery.

Operating Model	CW	CW
Wave Length	nm	1070-1080
Standard output power	w	1500
Laser Beam Quality	mm*mrad	4
Adjustable Frequency	Hz	5000
Transmission Fibre Diameter	um	50/100
Stability of Output Power		±2
power Supply	VAC	220V
Power Consumption	KW	5
Working Temperature	°C	5~35

The machine Optical is Fibre Transmission, it doesn't need complex reflect lens and other light system, the optical path is simple and stable structure, has free maintenance.

Laser coupled with optical gate can be a plurality of machine, through the fibre light divided into multiple units at the same time, it's easy to expand function and upgrade.

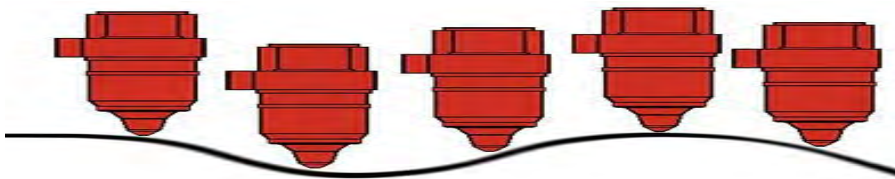
5.2 Laser cutting Head

- Switzerland imported laser cutting head **Raytool BM111**
- Auto Focus function (software control focus)
- Anti-collision function with non-contact Capacitance sensor
- Breakpoints Cutting
- Quick and Convenient part changing



Auto Focus saves a lot of time and enormously improves the efficiency of production and quality of piercing, when your material is uneven, the distance of Nozzle to the surface of material remains the same, that mean which highly improves the production efficiency and maintain the highest quality and uniformity during continuous production in the long-term.

Also the laser cutting head is equipped with **Non-Contact Capacitive Sensor**, reflection device and collision protection function, the machine will automatically stop cutting and flexibly diverges and reset when accident occurs,



More over, it is able to **resume the breakpoints cutting**, the cutting head and focus lens can withstand the pressure of 3MPa gas

Quick and Convenient Parts Changing: The laser head belongs to module design product, it is easy to install and disassemble, if you need to change lens or any part, it is very convenient to operate.

Auto Focus and Fast Piercing: With Auto focus and fast piercing functions of the cutting, save time.

5.3 Laser Cooling System



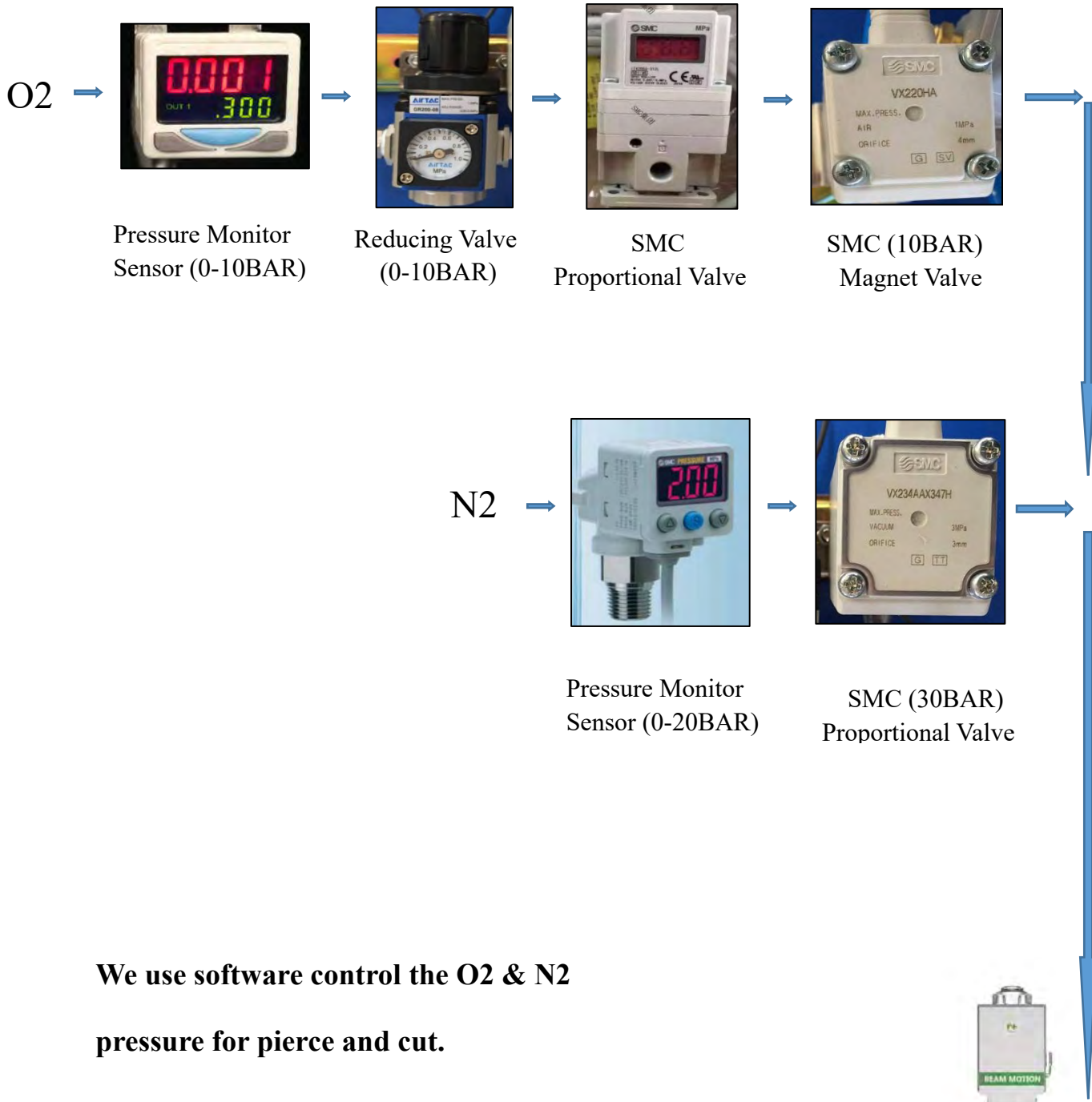
- The laser resonator, laser cutting head and other key components all get sufficient cooling to ensure machine's smooth and safety running.
- Adopt dual temperature control, which is precise, stable and reliable, able to set and maintain constant temperature
- The chillers have comprehensive protection functions of over-temperature, phase-loss, over-pressure, water-shortage, low-voltage, overload and so on. Since all the key-components and parts are imported, the chiller has the advantages of high stability, easy-maintenance and being in line with the cooling indicator requirement of the laser source and optical path.

5.4 Laser Voltage Stabilizer



50KVA Voltage Stabilizer

5.5 Laser Cutting Gas System



We use software control the O2 & N2 pressure for pierce and cut.

The Pressure Monitor Sensor will monitor the cutting gas pressure real time. Any gas pressure problem happen, the cutting software will alarm and machine will stop working.



6.The Machine Body

6.1 Stubborn main frame

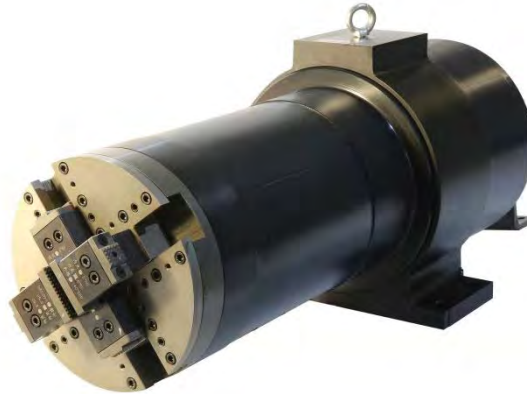
We adopt high rigid carbon square tube welding table, this structure can efficiently solve the issues of shaking and deformation during long time high speed working.



The total weight of whole machine up to 4 tons, Through twice age process and annealing treatment, protect body will not deformation.



6.2 Main Chuck System



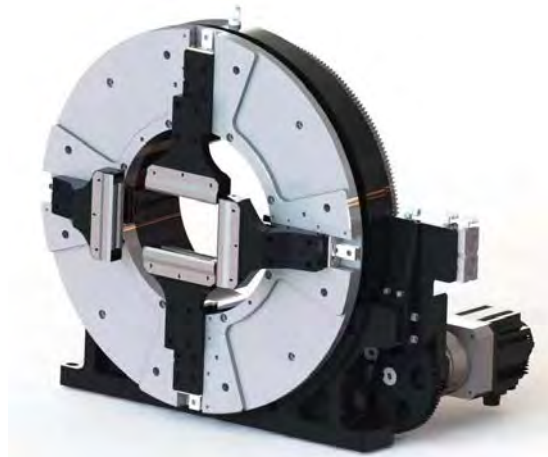
Two-claw linkage

Operate Mode: The opposite claws will move together.

Features:

1. No matter square pipe or circular pipe, the claws can be adjust easily according to pipe diameter.
2. Travel distance: diameter from 20 to 220mm, can clamp pipe automatically, no need to adjust.
3. Adopt small reduction ratio and high accuracy grinding gear, the rotate speed is up to 60 rpm, the sound is clear and melodious.

6.3 Front Chuck System



Two-Axes linkage

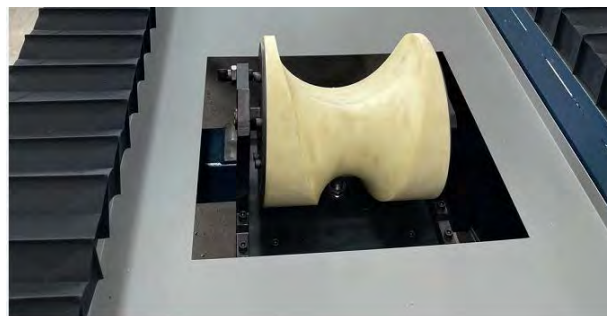
Operate Mode: One button clamping, Aviation aluminum process, low-inertia for cutting, gas pressure adjustable.

Features:

1. Automatically find the centre point.
2. Travel distance can reach to 220MM, All of the axle can be adjusted easily according to pipe diameter.

Sum: Save time, Save cost, Operate easily, More efficient!

6.4 Middle Support System



Features:

1. We use Variable diameter wheels to support tubes in the cutting process, Prevent shaking during cutting, Ensure cutting accuracy.
2. More than 1.5M products, the right 2 Variable diameter wheels will work automatically, to make the cutting stable and also can unloading the tubes. No need operator to hold after cutting.

7. Motion System

7.1 Rack and Pinion



RACK&PINION FROMYYC



Adopt YYC rack and pinion from Taiwan, which ensure high motion precision and stability. High rigidity and good wear resistance, able to maintain precision for a long time. Excellent motion performance, and perfect match.

7.2 Liner Guide



- Linear guide imported from HIWIN, Taiwan
- High precision linear guide
- High rigidity
- Maintenance and easy maintenance
- Less heat generated during moving
- No gap high mechanical efficiency
- Able to withstand both the upper and lower left and right direction of the load
- Easy to assemble and interchangeable
- Simple lubrication structure

8. TubePro CNC System

8.1 About TubePro

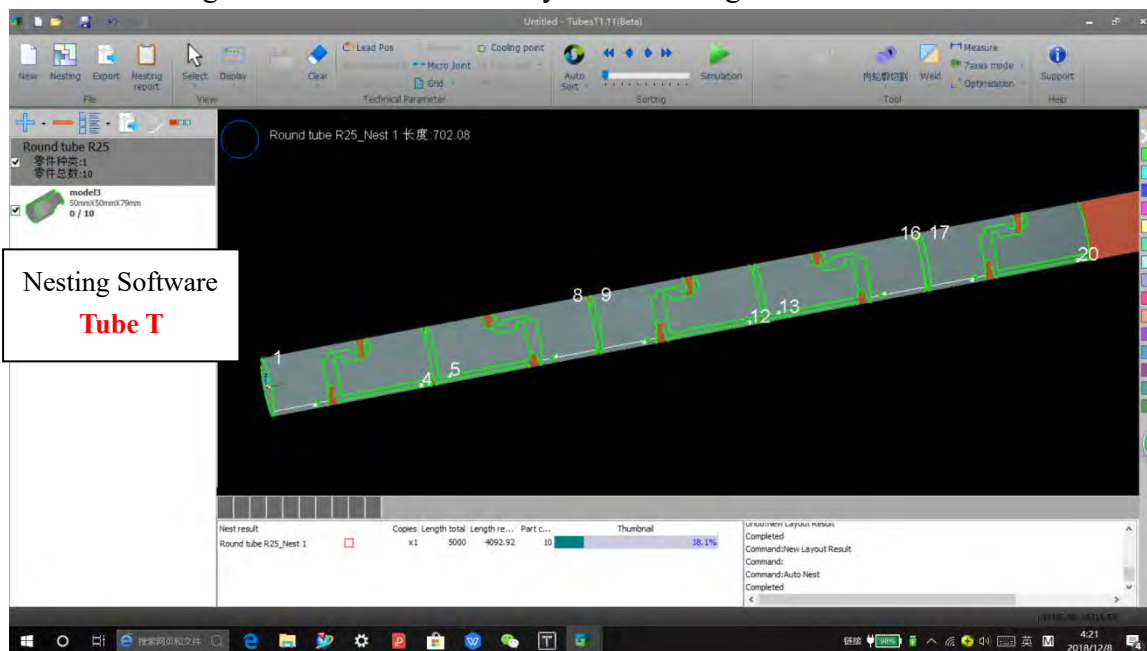
TubePro CNC system is made by Bochu company, which located in Shanghai, China, it is the most popular laser control and hardware manufacturing company in China, you can view it website by the link:

www.fscut.com

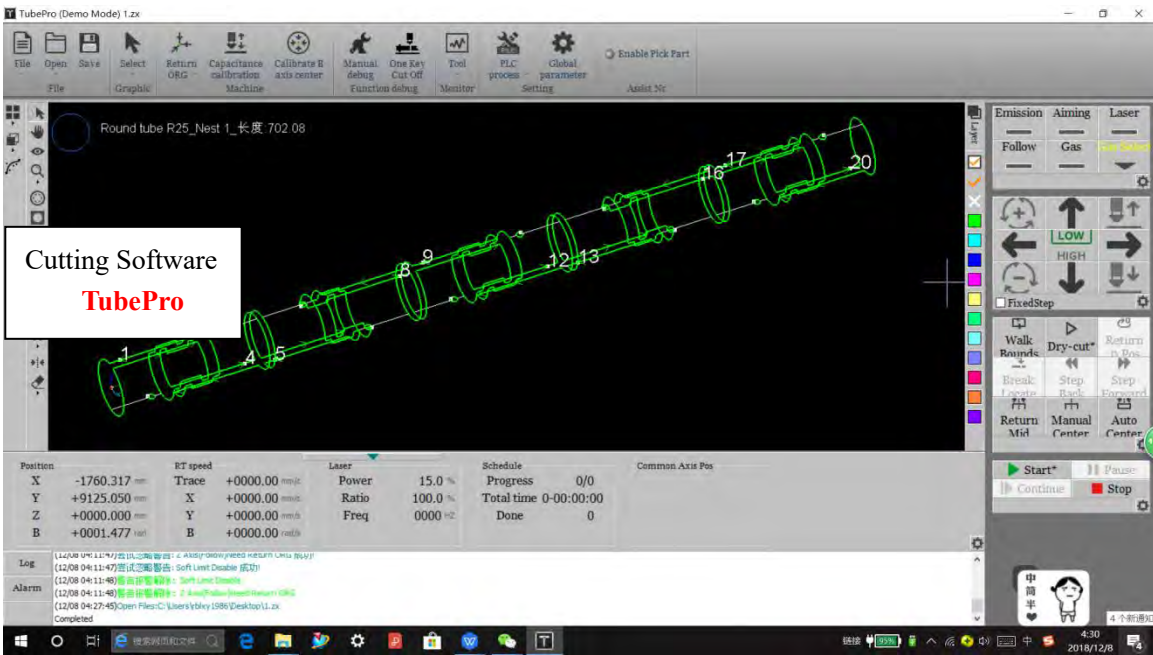
8.2 Features about TubePro

8.2.1. Intuitive Interface, Perfect Match with SolidWorks & UG NX.... Software.

TubePro software including the Nesting software Tube T, can import the parts by IGES files, Then do nesting to make the best stock layout for cutting.



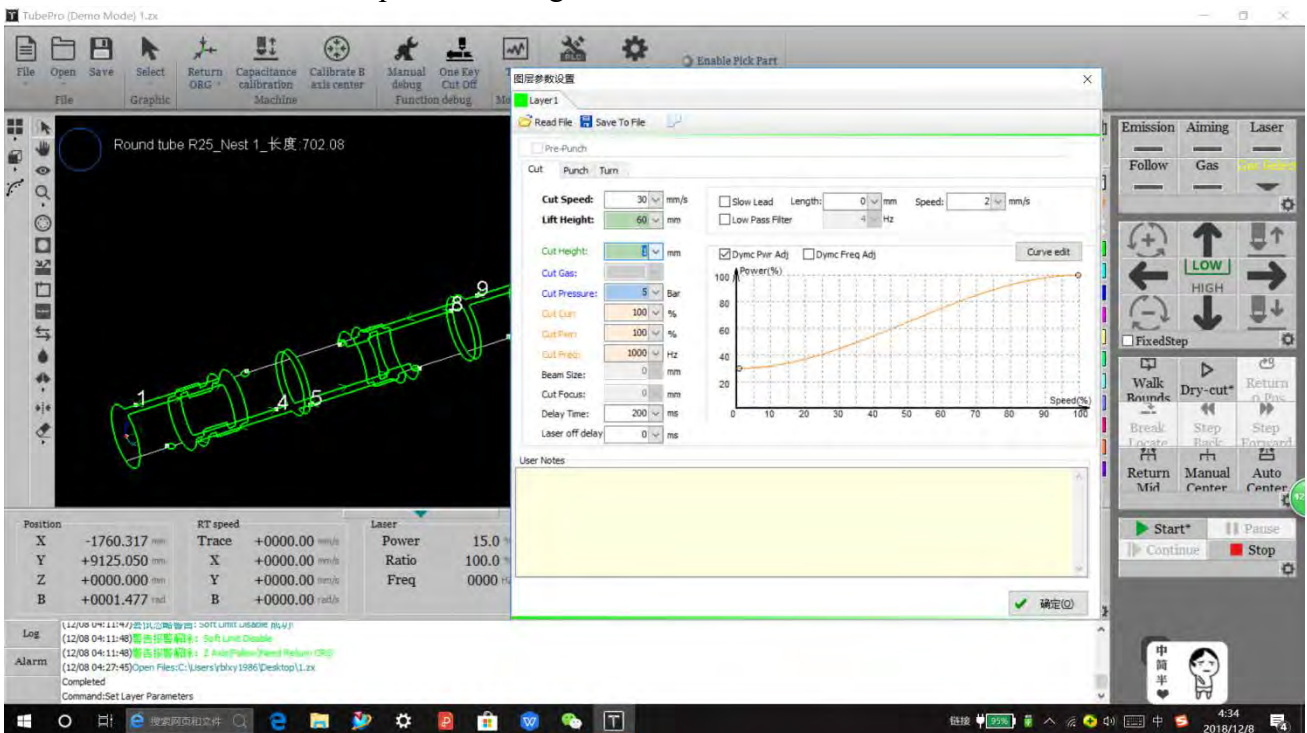
8.2.2 After Nesting we can import by TubePro software to cut.



8.2.3 Real-time

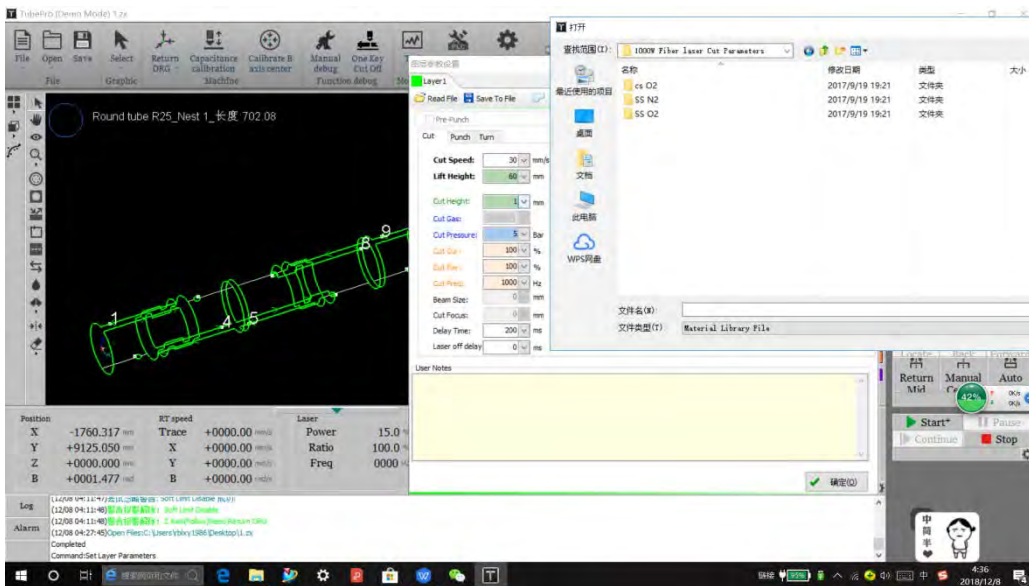
Power Adjustment

Cutting power adjusted in real time according to the actual design and speed make the corners, sharp corners, holes and other fine pattern cutting much more better.



8.2.3 Cutting Parameters Material Library

Providing a laser cutting parameters stored material library that can be called directly, make your operation more simple and convenient.



9. Electricity Cabinet



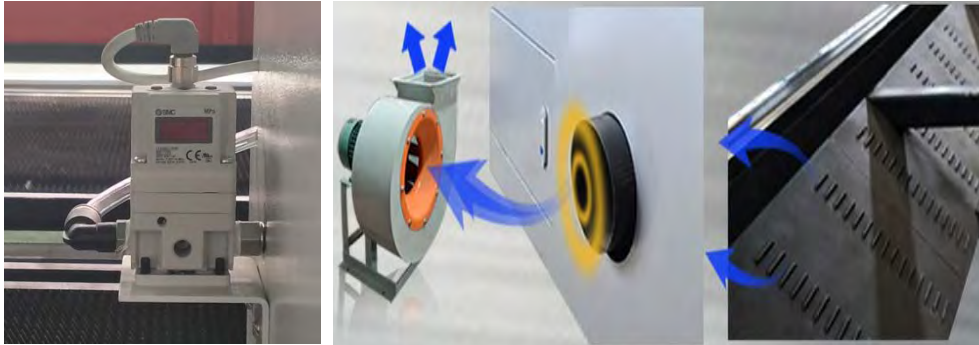
We use industrial control system, more stable and anti-interference.
Quick Adapter cable connection, easy to assembly and dis-assembly.

10. Other Units

10.1 SMC Proportional Valve

- It can automatically control 3 types of gas (O2/N2/Compressor air)
- By this auto pressure control of cutting gas, it can easily and precisely control the cutting gas for different cutting shapes, greatly improve the cutting precision of small hole, short line... such

small parts.



10.2 Auto Lubrication



- It can be programmed in CNC controller or control it manually (Usually 240min~480mins)
- It stops lubricating when the machine does not move
- Oil level alarm when it is lower than the set point, and oil pump stops to work
- Running status display function
- Cumulative time indication

10.3 X/Y/Z Drag Chain (IGUS Germany)



- For drag chains, X/Y/Z we all use IGUS Germany, to make the electricity wires, fibre cable, water pipes, gas pipes keep stable, no shake when machine high-speed moving.

10.4 Dust Exhaust System



We use 5.5KW Dust exhaust system for removing the dust when machine working, to keep the factory air clean.

11. Equipment installation

- The seller is responsible for installation, commissioning and delivery, the consumed materials and work pieces that needed for commissioning are to be borne by the buyer, special materials used by the machine are to be borne by the seller. The buyer is required to assist in following :
- The buyer is required to do the preparatory works in accordance with the foundation drawing, user self-preparation list and equipment working conditions that provided by the buyer.
- The buyer is responsible for unloading and placing of the machine at installation site, the seller is responsible for the installation, commissioning and training.
- The buyer is required to provide the conventional tools for installation and commissioning

12. Technical Training and After-sales Service

12.1 Technical Training

Training plan 1:

S.N.	Item	Content
1	Time	Before machine delivery
2	Location	Manufacturer factory
3	Training contents	① Maintenance : Routine maintenance, lubrication, assembling and disassembling lens; ② Operation: Equipment operation and basic trouble shooting; ③ Programming: the machine tool programming, transfer operations of programming procedures, the use of programming software and so on;

Training plan 2:

S.N.	Item	Contents	Notes
1	Time	Carried out simultaneously with the commissioning on customer's site	
2	Location	Customer's installation site	
3	Training contents	Participate in the whole process of installation and commissioning. Pls refer to the Customer Training Program for other information	

12.2 After-sales Service

Warranty period: From the acceptance qualified date, the warranty period for machine will be 1 (One) year,

Note: Laser Generator Guarantee 2 years (From the date out of laser generator factory)

After the warranty, we will also provide favorable service of long-term technical supports and spares supply to ensure machine's stable and continuous running.

The artificial damage in the warranty period and damage after warranty period, Seller offers paid service.

The Seller will give 24 hours service support during warranty time, and giving technical guide by email, telephone, Fax for daily maintenance, if need local support, Buyer has to pay for the travel and accommodation & meal cost for the people from seller's side, no labor charge require.

If products are out of warranty and require on site service, Buyer have to pay for the travel and accommodation & meal cost for the people from seller's side, labor charge is require, USD100/day per people.

About the transportation expenses of spare parts will be supported by both parties in the warranty period, like Buyer support the cost of transportation for damage spare part back to supplier; Seller support the new spare part deliver to Buyer. The second year all transportation expenses of spare parts will be supported by Buyer.



FLT6000 FIBRE LASER CUTTING MACHINE

REF:210520FLT6000

DATE: August 2023





WUHAN TA LASER MACHINERY CO.,LTD

Address: NO. S00340, 2/F, E-Commerce Building, Bldg. 1, NO. 58 Optical Valley Avenue.
East Lake High-Tech Development Zone Wuhan, China

Email: bob.ran@talasertech.com

Website: <http://www.talaser.net>

Mobile Phone: 0086-15871488866



TA LASER

WUHAN TALASER MACHINERY CO.,LTD

TA's Primary Customers:

Machinery dealers with technical service team

TA's Insist:

Reliable quality, fast service, is the only way leads to long term business success.

TA's Mission:

Endless technology, Forever service

Content

- 01** OPEN TYPE FIBER LASER CUTTING MACHINE
TA-FLS SERIES
- 02** OPEN TYPE FIBER LASER CUTTING MACHINE
TA-FLSE SERIES
- 03** CLOSED TYPE FIBER LASER CUTTING MACHINE
TA-FLSC SERIES
- 04** OPEN TYPE SHEET & TUBE FIBER LASER CUTTING MACHINE
TA-FLS-T SERIES
- 05** OPEN TYPE FIBER LASER CUTTING MACHINE WITH SHUTTLE TABLE
TA-FLX SERIES
- 06** OPEN TYPE SHEET & TUBE FIBER LASER CUTTING
MACHINE WITH SHUTTLE TABLE
TA-FLX-T SERIES
- 07** CLOSED TYPE FIBER LASER CUTTING MACHINE WITH SHUTTLE TABLE
TA-FLXC SERIES
- 08** CLOSED TYPE FIBER LASER CUTTING MACHINE WITH SHUTTLE TABLE
TA-FLXC-H SERIES
- 09** CLOSED TYPE FIBER LASER CUTTING MACHINE
TA-FLXC1530 SERIES
- 10** CLOSED TYPE FIBER LASER CUTTING MACHINE WITH SHUTTLE TABLE
WITH BEVEL CUTTING FUNCTION
TA-FLXC-B SERIES
- 11** CLOSED TYPE SHEET & TUBE FIBER LASER CUTTING
MACHINE WITH SHUTTLE TABLE
TA-FLXC-T SERIES
- 12** GROUND RAIL FIBER LASER CUTTING MACHINE
TA-FLG SERIES
- 13** FIVE AXIS TUBE LASER CUTTING MACHINE
TA-FLT6000 SERIES
- 14** SIX AXIS TUBE LASER CUTTING MACHINE
TA-FLT6025-6A SERIES
- 15** EIGHT AXIS TUBE LASER CUTTING MACHINE
TA-FLT6060-8A SERIES
- 16** HAND-HELD FIBER LASER WELDING MACHINE
TA-FLW SERIES
- 17** HAND-HELD FIBER LASER CLEANING MACHINE
TA-FLC SERIES

Who We Are ?

TA LASER is an excellent laser equipment manufacturer in Wuhan, China, which have been engaged for more than ten years in a wide range of laser applications and production.

Our production base is located at hi-tech development zone in Optical Valley, where is called Chinese 'Silicon Valley'. Ever since the start of our foundation, we have been dedicated ourselves to research and manufacture of best laser products and applications.

As a member of 'Wuhan Laser Association', we are making efforts to work and communicate with laser technology companies and giant manufacturers all over the world, for the purpose of bringing customers with best products.



What We Make ?

With our technologies and experiences growing for years, we have already put in market low/medium/high power fiber laser cutting machine, CO₂ laser cutting&engraving machine, laser marking machine, laser welding machine

Plant size over 3000 square meters with a wide range of equipment, as a professional industrial laser equipment manufacturer, our operations cover a complete chain of production including design, research, manufacturing, marketing, etc.

Precision processing application including cutting, engraving and welding, to satisfy various industrial needs.



OPEN TYPE FIBER LASER CUTTING MACHINE
TA-FLS SERIES

- 1. Autofocus laser head active collision prevention.
- 2. Intelligent CNC system, easy to operate.
- 3. Open type table design, save purchase cost, save working space, easy for loading and unloading.



Specification	Model
Processing Area	3000*1500mm, 4000*1500mm, 6000*1500mm 4000*2000mm, 6000*2000mm, 8000*2000mm 4000*2500mm, 6000*2500mm, 8000*2500mm Machine table size can be customized.
Laser Power	1500W-12000W
Laser Source	IPG / Raycus / Max
Max Acceleration	1.2G
Max Travelling Speed	120m/min
Positioning Accuracy	±0.02mm/m
Repeatability Accuracy	±0.01mm
Transmission	Dual-drive Rack & Pinion
Total Power Consumption	<75KVA
Power Supply	380V 50HZ / 380V 60HZ

OPEN TYPE FIBER LASER CUTTING MACHINE
TA-FLSE SERIES

- 1. Compact appearance design, integrated electric cabinet and operation cabinet, less cost, easy for shipping, save working place.
- 2. Extruded aviation aluminum beam, high dynamic response.
- 3. Intelligent CNC system, auxiliary gas low pressure monitor function.



Specification	Model
Processing Area	3000*1500mm, 4000*1500mm, 6000*1500mm 4000*2000mm, 6000*2000mm Machine table size can be customized
Laser Power	1500W-3000W
Laser Source	IPG / Raycus / Max
Max Acceleration	0.8G
Max Travelling Speed	60m/min
Positioning Accuracy	±0.03mm/m
Repeatability Accuracy	±0.01mm
Transmission	Dual-drive Rack & Pinion
Total Power Consumption	<25KVA
Power Supply	380V 50HZ / 380V 60HZ

CLOSED TYPE FIBER LASER CUTTING MACHINE
TA-FLSC SERIES

1. Fully protective construction reached CE safety standard, camera monitor instant cutting status.
2. Double open sliding door and intelligent feeding design, more efficient and convenient
3. Electric cabinet is integrated with machine body to occupy smaller area, this kind of fully-sealed structure and standard electric wires can prevent dust entry and risky flames.



Specification	Model
Processing Area	3000*1500mm, 4000*1500mm Machine table size can be customized
Laser Power	1500W-6000W
Laser Source	IPG / Raycus / Max
Max Acceleration	1.2G
Max Travelling Speed	120m/min
Positioning Accuracy	±0.02mm/m
Repeatability Accuracy	±0.01mm
Transmission	Dual-drive Rack & Pinion
Total Power Consumption	<40KVA
Power Supply	380V 50HZ / 380V 60HZ

OPEN TYPE SHEET & TUBE FIBER LASER CUTTING MACHINE
TA-FLS-T SERIES

1. Combining sheet laser cutting machine and tube laser cutting machine. Expand user's scope of cutting type and enhance their market competitiveness. Save purchasing costs, save working space.
2. Open structure design, convenient loading & unloading.
3. One-key switch between sheet cutting & tube cutting, easy to operate.



Specification	Model
Processing Area	3000*1500mm, 4000*1500mm, 6000*1500mm, 8000*1500mm 4000*2000mm, 6000*2000mm, 8000*2000mm Machine table size can be customized.
Tube Cutting Length	3000mm/6000mm
Chuck Type	220mm / 320mm / 360mm
Tube Section Shape	Round/Square/Rectangle/Oval/H type/L type/I type
Laser Power	1500W-12000W
Laser Source	IPG / Raycus / Max
Max Acceleration	0.8G
Max Travelling Speed	80m/min
Positioning Accuracy	±0.03mm/min
Repeatability Accuracy	±0.01mm
Transmission	Dual-drive Rack & Pinion
Total Power Consumption	<80KVA
Power Supply	380V 50HZ / 380V 60HZ

**OPEN TYPE FIBER LASER CUTTING MACHINE WITH SHUTTLE TABLE
TA-FLX SERIES**

1. Open type table design, save purchase cost, save working space.
2. Heavy duty structure design with strict processing methods, ensuring long life time.
3. User-friendly operation system with embedded nesting software.



Specification	Model
Processing Area	3000*1500mm, 4000*1500mm, 6000*1500mm 4000*2000mm, 6000*2000mm, 8000*2000mm 4000*2500mm, 6000*2500mm, 8000*2500mm Machine table size can be customized.
Laser Power	1500W-6000W
Laser Source	IPG / Raycus / Max
Max Acceleration	1.5G
Max Travelling Speed	120m/min
Positioning Accuracy	±0.02mm/m
Repeatability Accuracy	±0.01mm
Transmission	Dual-drive Rack & Pinion
Total Power Consumption	<45KVA
Power Supply	380V 50HZ / 380V 60HZ

**OPEN TYPE SHEET & TUBE FIBER LASER CUTTING
MACHINE WITH SHUTTLE TABLE
TA-FLX-T SERIES**

1. Combining sheet laser cutting machine and tube laser cutting machine. Expand user's scope of cutting type and enhance their market competitiveness. Save purchasing costs, save working space.
2. Open structure design, convenient loading & unloading.
3. One-key switch between sheet cutting & tube cutting, auxiliary gas low pressure monitor function.



Specification	Model
Processing Area	3000*1500mm, 4000*1500mm, 6000*1500mm 4000*2000mm, 6000*2000mm, 8000*2000mm Machine table size can be customized.
Tube Cutting Length	3000mm/6000mm
Chuck Type	220mm/320mm/360mm
Tube Section Shape	Round/Square/Rectangle/Oval/H type/L type/I type
Laser Power	1500W-6000W
Laser Source	IPG / Raycus / Max
Max Acceleration	1.0G
Max Travelling Speed	100m/min
Positioning Accuracy	±0.02mm/m
Repeatability Accuracy	±0.01mm
Transmission	Dual-drive Rack & Pinion
Total Power Consumption	<50KVA
Power Supply	380V 50HZ / 380V 60HZ

**CLOSED TYPE FIBER LASER CUTTING MACHINE
WITH SHUTTLE TABLE
TA-FLXC SERIES**

- 1. Full cover protection reached CE safety standard, camera monitor instant cutting status.
- 2. Heavy duty structure design with strict processing methods, ensuring long life time.
- 3. User-friendly operation system with embedded nesting software.



Specification	Model
Processing Area	3000*1500mm, 4000*1500mm, 6000*1500mm 4000*2000mm, 6000*2000mm, 8000*2000mm 4000*2500mm, 6000*2500mm, 8000*2500mm Machine table size can be customized
Laser Power	1500W-6000W
Laser Source	IPG / Raycus / Max
Max Acceleration	1.2G
Max Travelling Speed	120m/min
Positioning Accuracy	±0.02mm/m
Repeatability Accuracy	±0.01mm
Transmission	Dual-drive Rack & Pinion
Total Power Consumption	<48KVA
Power Supply	380V 50HZ / 380V 60HZ

**CLOSED TYPE FIBER LASER CUTTING MACHINE
WITH SHUTTLE TABLE
TA-FLXC-H SERIES**

- 1. Aviation cast aluminum beam, professional fire prevention, high efficiency exhaust dust removal system.
- 2. Burr-free piercing, super-fast cutting, fast response technology, high cutting efficiency.
- 3. CNC bus system, professional nesting software, auto nozzle cleaning and calibration.



Specification	Model
Processing Area	3000*1500mm, 4000*1500mm, 6000*1500mm 4000*2000mm, 6000*2000mm, 8000*2000mm 4000*2500mm, 6000*2500mm, 8000*2500mm Machine table size can be customized
Laser Power	6000W-30000W
Laser Source	IPG / Raycus / Max
Max Acceleration	1.5G
Max Travelling Speed	140m/min
Positioning Accuracy	±0.02mm/m
Repeatability Accuracy	±0.01mm
Transmission	Dual-drive Rack & Pinion
Total Power Consumption	<140KVA
Power Supply	380V 50HZ / 380V 60HZ

CLOSED TYPE FIBER LASER CUTTING MACHINE
TA-FLXC1530 SERIES

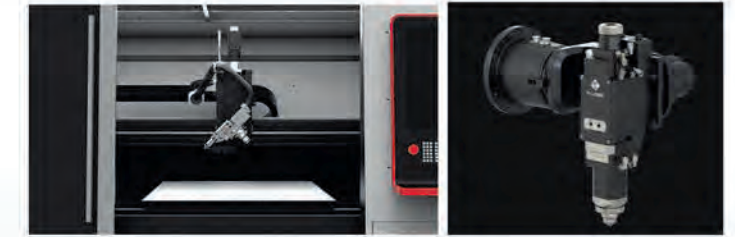
- 1. Full cover protection reached CE safety standard, camera monitor instant cutting status.
- 2. Different from traditional design, adopt horizontal exchange way, save exchange time.
- 3. Can meet the different space location requirements of the customer's factory.



Specification	Model
Processing Area	1500*3000mm
Laser Power	1500W-6000W
Laser Source	IPG / Raycus / Max
Max Acceleration	0.8G
Max Travelling Speed	60m/min
Positioning Accuracy	±0.03mm/m
Repeatability Accuracy	±0.01mm
Transmission	Dual-drive Rack & Pinion
Total Power Consumption	<40KVA
Power Supply	380V 50HZ / 380V 60HZ

CLOSED TYPE FIBER LASER CUTTING MACHINE
WITH SHUTTLE TABLE
WITH BEVEL CUTTING FUNCTION
TA-FLXC-B SERIES

- 1. Equipped with bevel cutting head, rotation A B axis, bus drive system.
- 2. Heavy duty quality machined railway track, gives accuracy and stability to the machine for the whole working life.
- 3. Auto-Focus 3D cutting head with bus system realize 0-45 bevel cutting with V type, X type, Y type and K type.



Specification	Model
Processing Area	3000*2500mm, 4000*2500mm, 6000*2500mm, 8000*2500mm Machine table size can be customized
Laser Power	6000W-30000W
Laser Source	IPG / Raycus / Max
Max Acceleration	1.2G
Max Travelling Speed	120m/min
Positioning Accuracy	±0.02mm/m
Repeatability Accuracy	±0.01mm
Transmission	Dual-drive Rack & Pinion
Total Power Consumption	<140KVA
Power Supply	380V 50HZ / 380V 60HZ

CLOSED TYPE SHEET & TUBE FIBER LASER CUTTING MACHINE WITH SHUTTLE TABLE
TA-FLXC-T SERIES

1. Combining a sheet laser cutting machine and tube laser cutting machine. Expand user's scope of cutting type and enhance their market competitiveness. Save purchasing costs, save working space.
2. Double pneumatic chucks 2~3 times faster than traditional electric chucks, 2 variable diameter rollers are adopted for a wide range of clamping and high cutting precision.
3. Full closed cover design, reached CE safety standard, make cutting more safe.



Specification	Model
Processing Area	3000*1500mm, 4000*1500mm, 6000*1500mm 4000*2000mm, 6000*2000mm, 8000*2000mm Machine table size can be customized
Tube Cutting Length	3000mm/6000mm
Chuck Type	220mm/320mm/360mm
Tube Section Shape	Round/Square/Rectangle/Oval/H type/L type/I type
Laser Power	1500W-12000W
Laser Source	IPG / Raycus / Max
Max Acceleration	1.0G
Max Travelling Speed	100m/min
Positioning Accuracy	±0.03mm/m
Repeatability Accuracy	±0.01mm
Transmission	Dual-drive Rack & Pinion
Total Power Consumption	<80KVA
Power Supply	380V 50HZ / 380V 60HZ

GROUND RAIL FIBER LASER CUTTING MACHINE
TA-FLG SERIES

1. Gantry machine externable structure, modular working table design.
2. Precision machined, hardened, heavy duty drive rack on both the long and the cross travel direction, ensure high accuracy and long service life.
3. Low cutting taper, little kerf, high material utilization.
4. Bevel cutting function is optional.



Specification	Model
Processing Area	12000*2000mm, 12000*2500mm, 12000*3000mm. Machine table size can be customized.
Laser Power	6000W-30000W
Laser Source	IPG / Raycus / Max
Max Acceleration	0.8G
Max Travelling Speed	80m/min
Positioning Accuracy	±0.03mm/m
Repeatability Accuracy	±0.08mm
Transmission	Dual-drive Rack & Pinion
Total Power Consumption	<140KVA
Power Supply	380V 50HZ / 380V 60HZ

FIVE AXIS TUBE LASER CUTTING MACHINE TA-FLT6000 SERIES

1. Thick steel tube and plate welding, high stability, high temperature annealing treatment, less heat absorption, deformation prevention.
2. It employs intelligent tube support design which can solve the deformation problems in the process of long tube cutting.
3. Simple unloading system with two roller supports, high efficiency, super convenient.
4. Auto loading system is optional, bevel cutting function is optional.



Specification	Model
Tube Cutting Length	3000mm/6000mm/9000mm Machine table size can be customized
Z Axis Stroke	240mm
Chuck Type	220mm / 320mm / 360mm/520mm
Tube Section Shape	Round/Square/Rectangle/Oval/H type/L type/I type
Laser Power	1500W-6000W
Laser Source	IPG / Raycus / Max
W Rotation Accuracy	≤0.05mm
Positioning Accuracy	±0.02mm/m
Repeatability Accuracy	±0.01mm
Transmission	Single-drive Rack & Pinion
Total Power Consumption	<40KVA
Power Supply	380V 50HZ / 380V 60HZ

SIX AXIS TUBE LASER CUTTING MACHINE TA-FLT6025-6A SERIES

1. Bus control system, front chuck can move 2500mm, ensure the long finishing part cutting accuracy.
2. Laser head can move to both side of the front chuck, to ensure the waste tube length less than 80mm.
3. It is equipped with follow-up support and roller support, which can effectively support the tube in the process of cutting and unloading, ensure the stability and accuracy of cutting.
4. Auto loading system is optional, bevel cutting function is optional.



Specification	Model
Tube Cutting Length	3000mm/6000mm/9000mm Machine table size can be customized
Z Axis Stroke	240mm
Chuck Type	220mm / 320mm / 360mm/520mm
Tube Section Shape	Round/Square/Rectangle/Oval/H type/L type/I type
Laser Power	1500W-6000W
Laser Source	IPG / Raycus / Max
W Rotation Accuracy	≤0.05mm
Positioning Accuracy	±0.02mm/m
Repeatability Accuracy	±0.01mm
Transmission	Single-drive Rack & Pinion
Total Power Consumption	<45KVA
Power Supply	380V 50HZ / 380V 60HZ

EIGHT AXIS TUBE LASER CUTTING MACHINE TA-FLT6060-8A SERIES

1. Three chucks design, bus control system, laser head can move to both side of the middle chuck, can realize whole tube cutting.
2. It is equipped with follow-up support and roller support, which can effectively support the tube in the process of cutting and unloading, ensure the stability and accuracy of cutting.
3. Three chucks design, in the cutting process, any time the tube will be in stable situation, for any length finishing part will get perfect cutting accuracy.
4. Auto loading/unloading system is optional, bevel cutting function is optional.



Specification	Model
Tube Cutting Length	6000mm/9000mm Machine table size can be customized
Z Axis Stroke	240mm
Chuck Type	220mm / 320mm / 360mm/520mm
Tube Section Shape	Round/Square/Rectangle/Oval/H type/L type/I type
Laser Power	1500W-6000W
Laser Source	IPG / Raycus / Max
W Rotation Accuracy	≅ 0.05mm
Positioning Accuracy	±0.02mm/m
Repeatability Accuracy	±0.01mm
Transmission	Single-drive Rack & Pinion
Total Power Consumption	<45KVA
Power Supply	380V 50HZ / 380V 60HZ

HAND-HELD FIBER LASER WELDING MACHINE TA-FLW SERIES

1. More efficiency and lower maintenance costs.
2. Welding routes are solid and smooth under mode of continuous laser. Little deformation and tiny bulgeless or no need polishing, saving labor and time costs.
3. Compact size design, easy to move, easy to install and control.
4. Welding gas pressure monitor system, air conditioner system ensure long life using time.



Specification	Model
Laser Mode	Six Different Modes
Laser Power	1000W-3000W
Laser Source	Raycus/MAX
Power Adjusting Range	10-100%
Laser Spot Range	0.2mm-6mm
Emission Wavelength (nm)	1080±5
Laser Frequency Range	50-20000Hz/50-5000Hz
Laser wobble Frequency Range	20-200HZ
Fiber Length	5m
Cooling Method	Water cooling
Machine Dimensions	1000MM*650MM*1250MM
Welding Material	Carbon steel, Stainless steel, Aluminum
Welding Penetration	≅ 5MM
Power Supply	AC 220V±10% / AC 380V±10% ,50/60Hz

1. Easy to remove resin stains, paint-coat, rust, cladding material and paint.
2. Compact size design, easy to Move, easy to install and control easy to move.
3. No secondary pollution, no noise dust hazard, conducive to environmental protection.



Specification	Model
Laser Mode	Six Different Modes
Laser Power	1000W-2000W
Laser Source	Raycus/MAX
Power Adjusting Range	10-100%
Emission Wavelength (nm)	1080±5
Laser Frequency Range	50-20000Hz/50-5000Hz
Fiber Length	5m
Cooling Method	Water cooling
Machine Dimensions	1000MM*650MM*1250MM
Power Supply	AC 220V±10%/ AC 380V±10% ,50/60Hz

Laser Marking Machine (Fiber/CO₂/UV/Green Laser)

TA-FLM Series



Laser Source	Fiber/ CO ₂ /UV/ Green Laser Source
Application Material	Fiber Laser for metal material marking; and CO ₂ laser for nonmetal material marking.
Optional Device & Function	1) Rotary device; 2) Dynamic (auto-focus) marking system; 3) CCD auto-positioning visual marking system



Precision Fiber Laser Cutting Machine

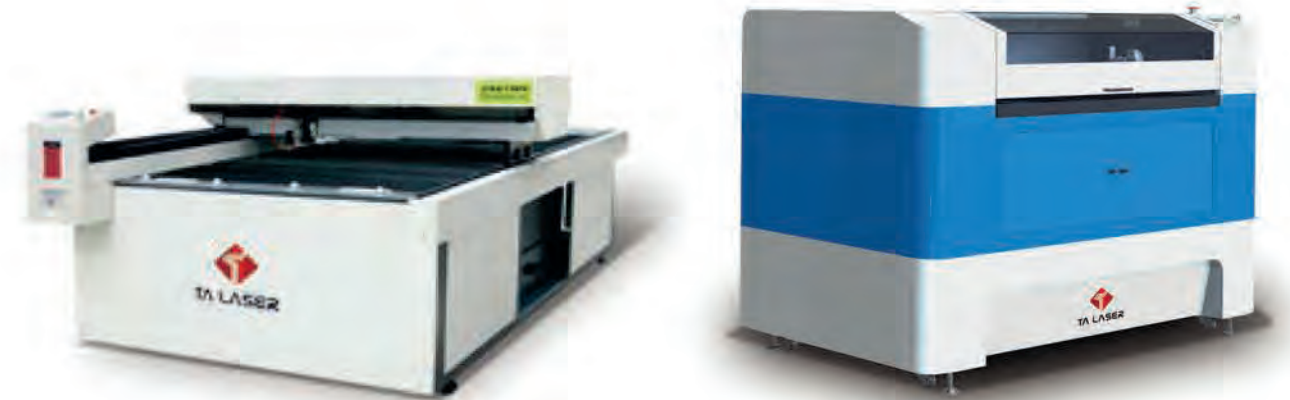
TA-FLP Series



Laser Source	Fiber Laser
Application	Precise & fast processing in a smaller scale. Different laser source is selected for different processing material for the best performance.
Application Industries	Glass industry. PCB circuit industry. touch screen industry. ceramic industry etc.

CO₂ Laser Cutting Machine for Nonmetal Material

TA-CLC Series



Laser Power	60w/80w/100w/130w/150w/320W
Working Size	1000x600mm, 1300x900mm, 1600x1000mm, 2500x1300m
Applicable Materials	Acrylic, wood, carton box, leather, cloth, paper, etc

Laser Cutting Assisting Equipment & Spare Parts



Deburring Machine



Dust Collector



Compressed Air Station



Pneumatic Sheet Loading Device



Voltage Transformer & Regulators



Laser Machinery Spare Parts

Cut Sample

Metal sheet fabrication, mechanic parts
1mm-20mm metal sheet cutting



Sport equipment industry



Encasement, cabinet manufacturing
below 2mm metal sheet cutting



Kitchenware industry
stainless steel sheet cutting



Light industry
round, square and conical tube cutting



Automotive industry
automotive parts processing

